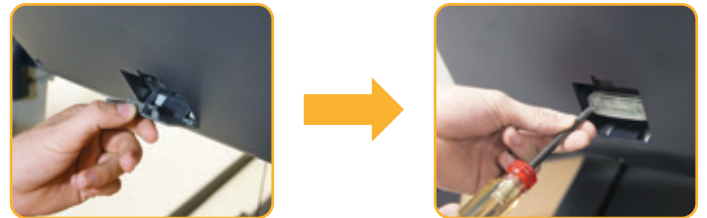


Bluetooth Adapter Installation

1. Turn off the power to your LifeSpan treadmill or elliptical.
2. Remove cover on the back of the console.
3. Install Bluetooth adapter using the two screws supplied.
4. Replace cover in back of console.
5. Turn on the power to your treadmill or elliptical.



Club Membership Set-Up

1. Visit www.LifeSpanFitness.com/apps/club and click on the “Enroll Now” button in Step 1.
2. Enter the enrollment ID number provided on the cover of your owner’s manual and agree to privacy terms. If you don’t have your enrollment ID number, or wish to create multiple accounts, enter the word “FREE” to unlock each additional account.
3. Enter your name, email address, and a password and click Continue. That’s it!

App Download

1. Visit www.LifeSpanFitness.com/apps for a selection of available apps. Use the table at the bottom of the page to best guide you. **Note:** The Active Trac app for Android and iPhone works with all LifeSpan Bluetooth capable exercise treadmills and ellipticals.
2. Download applicable app to your device.
3. Login using the email address and password you used to create your Club account.